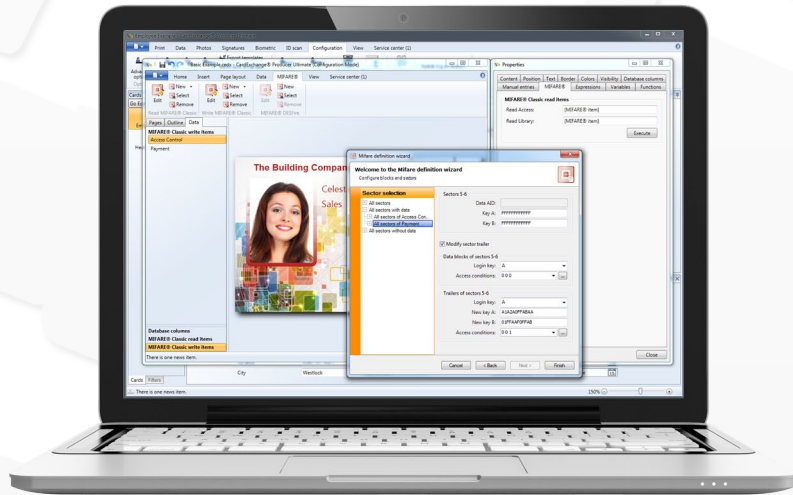


ID CARD  
PRODUCTION  
SOLUTIONS

**MATICA**  
TECHNOLOGIES

CARD EXCHANGE PRODUCER  
EDITIONS



# Overview of different editions

## CardExchange™ Producer

	Go	Premium	Professional	Ultimate
<b>Service and Support</b>				
License via Activation	✓	✓	✓	✓
Online Service Center	✓	✓	✓	✓
Template Migration Tool	✓	✓	✓	✓
Online and Offline Help	✓	✓	✓	✓
FREE End-User Support Forum	✓	✓	✓	✓
<b>Design Tools and Functionality Features</b>				
Various Card Sizes	CR-80 Only	All Sizes	All Sizes	All Sizes
Add Card Templates	5	Unlimited	Unlimited	Unlimited
Pre-defined Templates	✓	✓	✓	✓
Card Template Manager	✓	✓	✓	✓
Step-by-Step Card Design Wizard	✓	✓	✓	✓
Text, Image, and Drawing Objects	✓	✓	✓	✓
Content Alignment Tools	✓	✓	✓	✓
Border Object Features	✓	✓	✓	✓
Ghosting Images	✓	✓	✓	✓
Image Opacity Masking	✓	✓	✓	✓
Resize Font to Fit Feature	✓	✓	✓	✓
1D Barcodes	✓	✓	✓	✓
Manual Data Entries	✓	✓	✓	✓
Grouping of Templates	—	✓	✓	✓
Background Removal	—	✓	✓	✓
2D Barcodes	—	✓	✓	✓
Export Card Preview	—	✓	✓	✓
Automate Manual Insert Actions	—	✓	✓	✓
Unlimited Layouts per Template	—	—	✓	✓
Python Scripting Language	—	—	—	✓
<b>Printing Features</b>				
Print to Windows Printers	✓	✓	✓	✓
Single and Double Sided Printing	✓	✓	✓	✓
UV Panel Printing	—	✓	✓	✓
Batch Printing	—	✓	✓	✓
Windows Print Manager	—	✓	✓	✓
Print Production Reports	—	✓	✓	✓
Auto Print Server	—	—	✓	✓

	Go	Premium	Professional	Ultimate
<b>Photos, Signatures, and Image Features</b>				
Image Tools Editor	✓	✓	✓	✓
Import and Export Images	✓	✓	✓	✓
DirectShow Webcam Support	✓	✓	✓	✓
Twain Image Acquisition	✓	✓	✓	✓
Canon Camera Support	✓	✓	✓	✓
Copy and Paste Photos	—	✓	✓	✓
Advanced Photo Options	—	✓	✓	✓
Signature Pad Support	—	✓	✓	✓
Copy and Paste Signatures	—	✓	✓	✓
Advanced Signature Options	—	✓	✓	✓
Automatic Face Recognition	—	—	✓	✓
<b>Database Connectivity</b>				
Internal MS Access Database	200 Records	Unlimited	Unlimited	Unlimited
MS Excel Connectivity (all Office versions)	—	✓	✓	✓
CSV and Text DB Connectivity	—	✓	✓	✓
MS Access Connectivity (all Office versions)	—	✓	✓	✓
Paradox Connectivity	—	✓	✓	✓
MS SQL Server Connectivity (native)	—	—	✓	✓
Oracle Connectivity (native)	—	—	✓	✓
MySQL Connectivity (native)	—	—	✓	✓
DB2 Connectivity (native)	—	—	✓	✓
PostgreSQL Connectivity (native)	—	—	✓	✓
ODBC Connectivity	—	—	✓	✓
<b>Database Features</b>				
Pre-defined Database Templates	✓	✓	✓	✓
Database Record Edit Window	✓	✓	✓	✓
Enhanced Data Record Presentation (Datagrid)	✓	✓	✓	✓
Record Column Filter and Sorting	✓	✓	✓	✓
Store Photos in Database	✓	✓	✓	✓
Add, Update, and Delete Database Records	✓	✓	✓	✓
Store Signatures and Images in Database	—	✓	✓	✓
Automate Record Insert Options	—	✓	✓	✓
Store Global Counters in Database	—	✓	✓	✓
Store Print Counters in Database	—	✓	✓	✓
Store Environment Variables like Username and Login in Database	—	✓	✓	✓
Drop Down Menus with Fixed Values	—	✓	✓	✓
Create and Store Database Filter per Template	—	✓	✓	✓
Create and Store User Specific Record Lookup Filters	—	5	Unlimited	Unlimited
Live Database Record Lookup Filter	—	✓	✓	✓
Database Column Management (Visible, Editable)	—	✓	✓	✓
Advanced Primary Key Options	—	—	✓	✓
Advanced Update/Insert Options	—	—	✓	✓
Advanced Error Behavior Options	—	—	✓	✓
Create Internal Views/Queries	—	—	✓	✓
Drop Down Menus with Database Table Lookup	—	—	✓	✓
Multiple Database Server Connections	—	—	✓	✓
Store Production Data in Multiple Connected Databases	—	—	✓	✓
Store Photos, Signatures, and Images in Multiple Databases	—	—	✓	✓
True Live Push-Pull Database Records	—	—	✓	✓
Create Column Requirements for Inserting/Updating Records	—	—	✓	✓
Create Column Requirements for Record Printing	—	—	✓	✓
Prompt Value before Printing Records	—	—	✓	✓

	Go	Premium	Professional	Ultimate
<b>Security Features</b>				
Login Feature	—	✓	✓	✓
Create Users	—	5	Unlimited	Unlimited
Create User Groups	—	3	Unlimited	Unlimited
Create User Group Profiles	—	✓	✓	✓
Assign/Remove User(s) To/From Groups	—	✓	✓	✓
Temporary Block User(s)	—	✓	✓	✓
Hide Functionality for Group(s)/User(s)	—	✓	✓	✓
Hide Card Templates for User(s)/Group(s)	—	✓	✓	✓
Hide Database Information for User(s)/Group(s)	—	✓	✓	✓
Advanced Fraud Protection Mechanism	—	✓	✓	✓
Create Specific User Profiles	—	—	—	✓
Account Password Expire Feature	—	—	—	✓
<b>Encoding Features</b>				
Magnetic Encoding	✓	✓	✓	✓
MIFARE® Classic 1K and 4K	—	—	—	✓
MIFARE® DESFire EV1 (all memory formats)	—	—	—	✓
MIFARE® SAM AV2	—	—	—	✓
HID® Proximity Reading	—	—	—	✓
<b>Biometric Features</b>				
Enrollment	—	—	—	✓
Verify	—	—	—	✓
Record Lookup	—	—	—	✓
Record Display	—	—	—	✓
<b>ID Scan Features</b>				
Store and Print Image	—	—	—	✓
Store and Print Photo	—	—	—	✓
Store and Print Signature	—	—	—	✓
Store and Print OCR	—	—	—	✓